



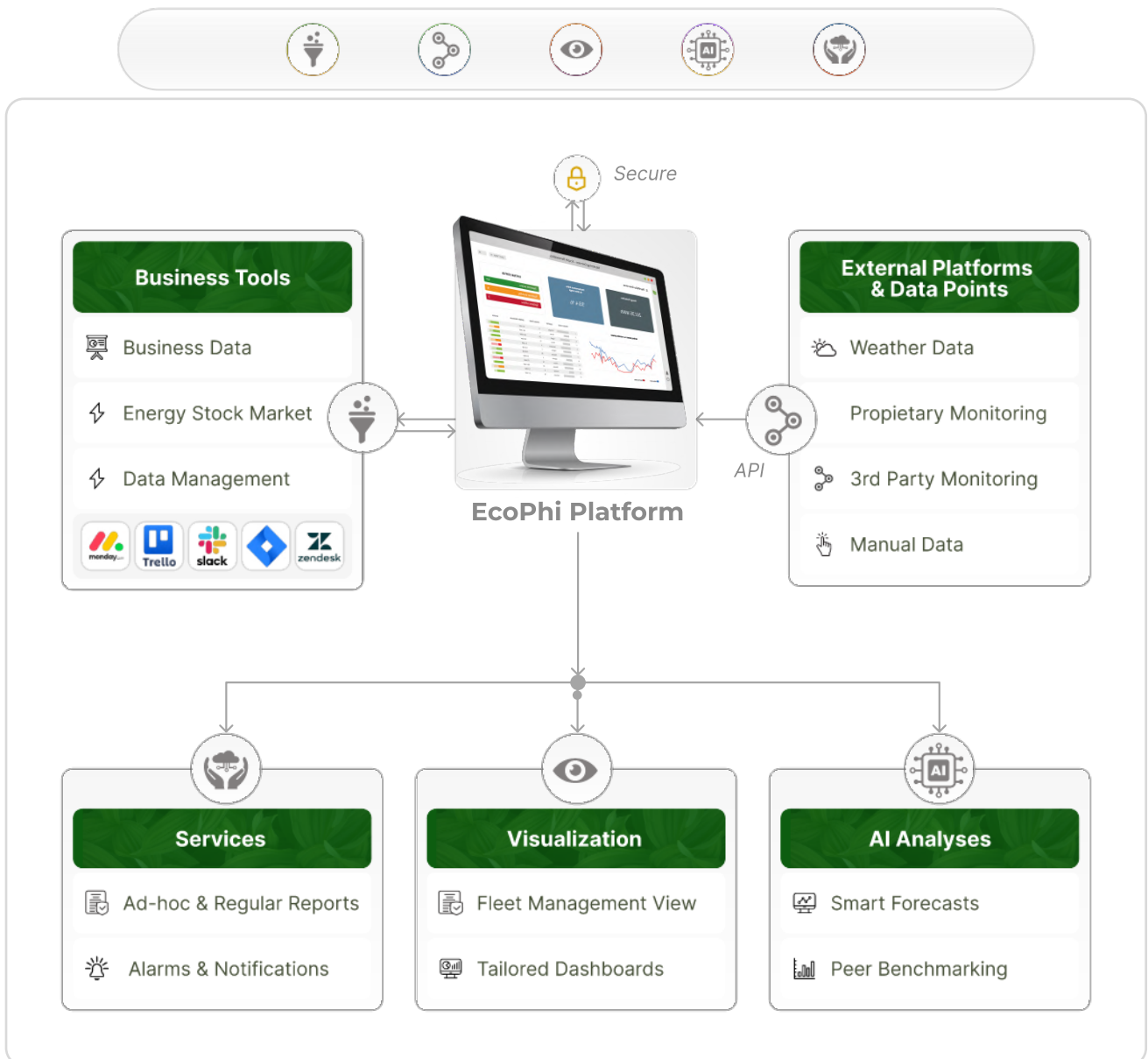
EcoPhi Hub

The intelligent cloud platform to
Manage your Energy Transition ⚡



EcoPhi Hub

EcoPhi offers a modular and flexible cloud platform that integrates system data from different renewable energy systems together with external data. The platform adapts to your needs and enables you to efficiently manage and control your renewable energy assets.



Being highly versatile, the EcoPhi Hub adapts to your needs and can be used to monitor few simple systems as well as large and complex portfolios.

System monitoring, control and asset management

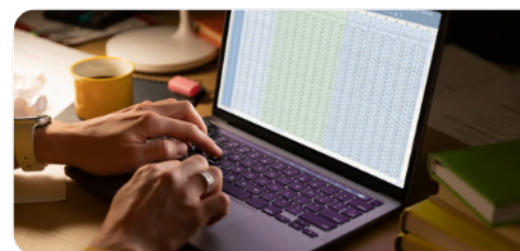
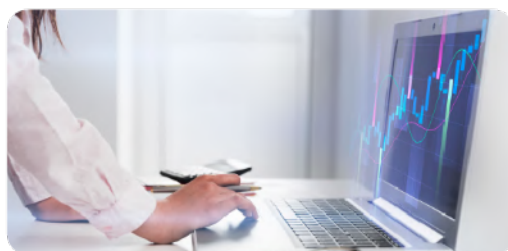
Remote Control

It is possible to remotely control the settings of the EcoPhi Boxes. Also, many inverters can be controlled via the platform. Additional relays allow system-specific control options.



All EcoPhi Boxes can be controlled via the web application. This includes changing the settings to connect inverters, sensors, and other components.

Depending on your individual requirements, EcoPhi provides a variety of additional services, e.g. alarms and notifications, reports, performance analyses or a matching of technicians for maintenance and repair.



Visualization

🌐 Access via web browser from any device

Responsive design allows access using smartphones, tablets, or computers.

🌐 Overview visualization

Fleet management: List of systems and easy filtering

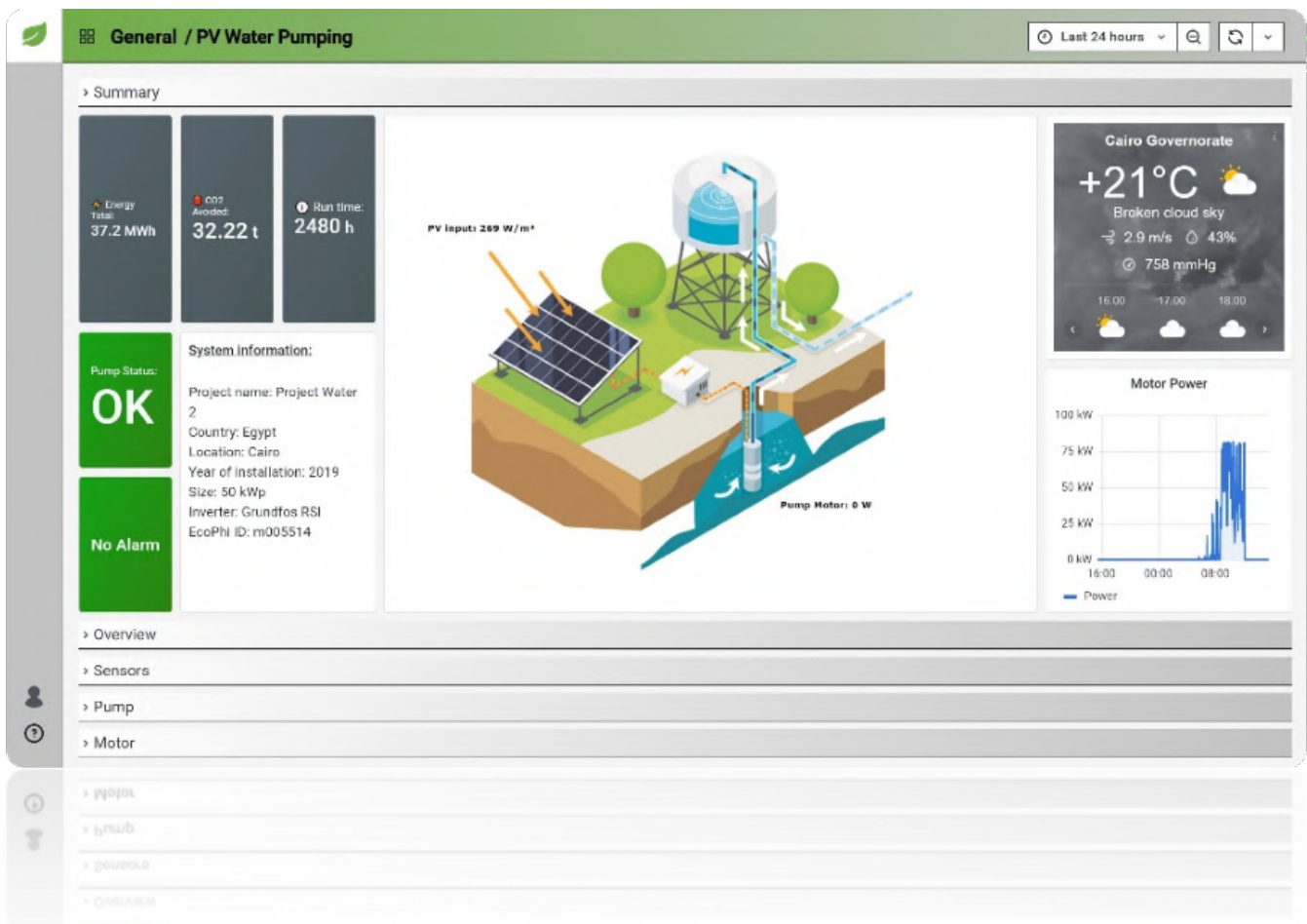
Map view: Visualize geographically distributed systems on a map.

🌐 Detailed system visualization

Analyze the detailed data of individual systems: Graphs, bar charts, and other visualizations make it easy.

🌐 Individual and calculated figures

Individual KPIs or visualizations resulting from different data sources and calculations can be created.

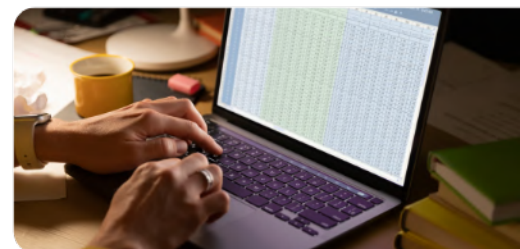
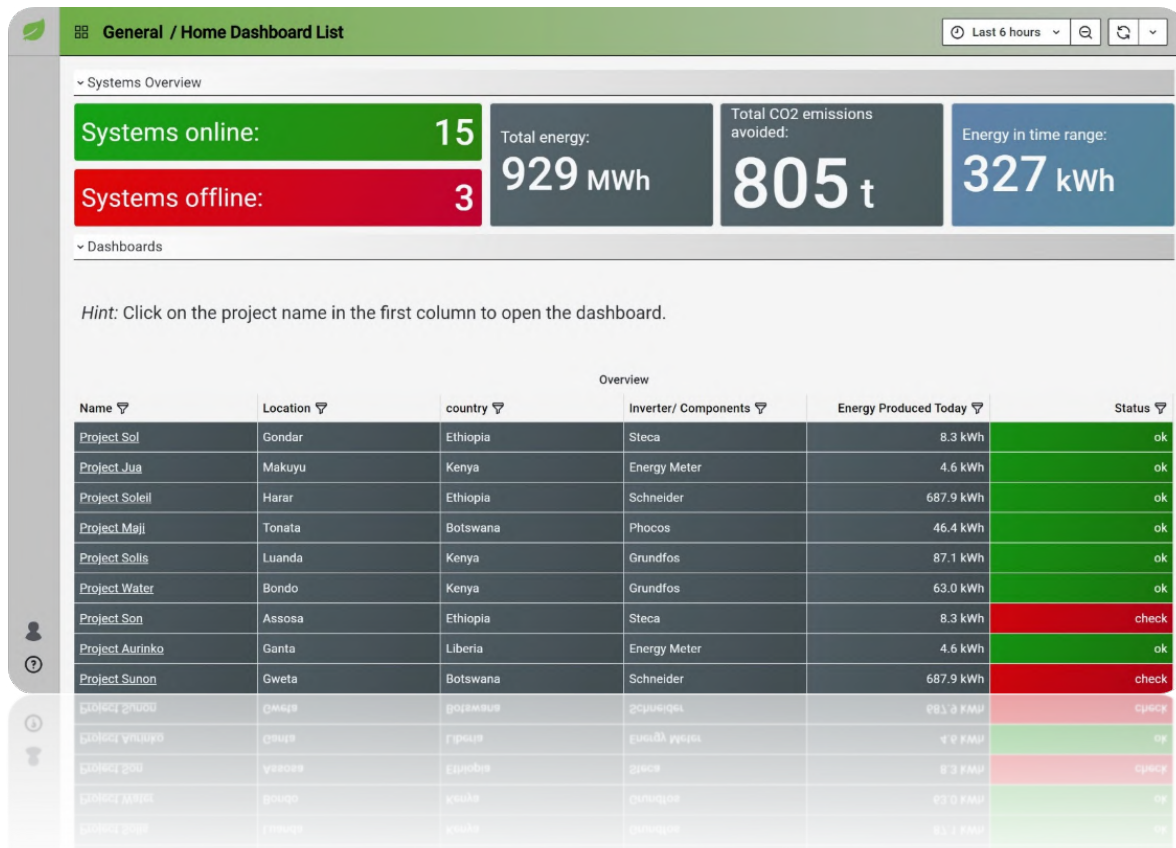


Visualization: Asset Management Overview

The EcoPhi Platform provides fleet and asset management overviews as well as detailed single system visualizations.

The overview is provided in the form of images, lists, or maps. Filter and sort the systems by your specific and relevant parameters. Have overall portfolio data calculated and visualized.

The visibility and access to the systems can be individually granted to team members, partners and customers.

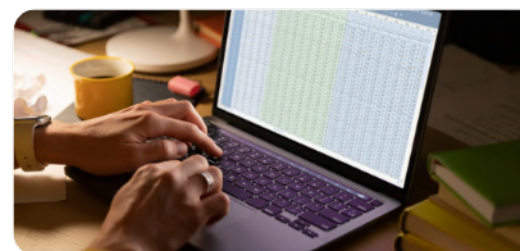
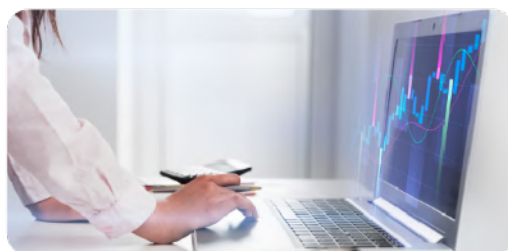


Visualization: Single System View

For every system, a separate dashboard with detailed information is provided.

EcoPhi offers standard visualization templates, but the dashboard can also be adjusted according to the customer requirements.

So depending on the stakeholders of the projects, different information can be focused on.



Receiving data

🌿 On-site data

If you have an EcoPhi Monitoring and Control Box, the system data will be transferred to the EcoPhi Hub.

🌿 External Data Integration

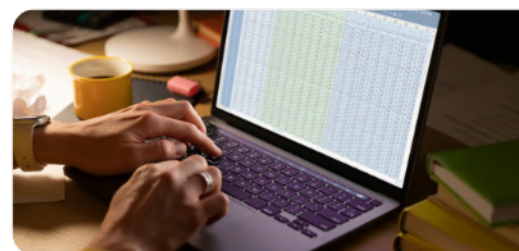
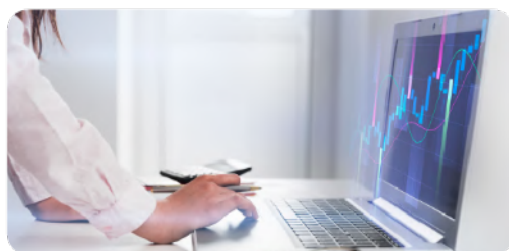
Existing data can be connected to the EcoPhi Cloud via API connections. This allows e.g. data from inverter platforms to be integrated in addition to or without the need of an EcoPhi Box. It can be system data from other platforms, open data like weather information or internal business data to enrich the portfolio and facilitate further data handling.

🌿 Uploading manual data

In some cases, data is not being tracked digitally and needs to be inserted manually, which can also be done via an input form.

🌿 Uploading historical data

It is possible to upload already existing data. For this purpose a CSV file can be sent to EcoPhi. The existing data will then be added.



Working with data

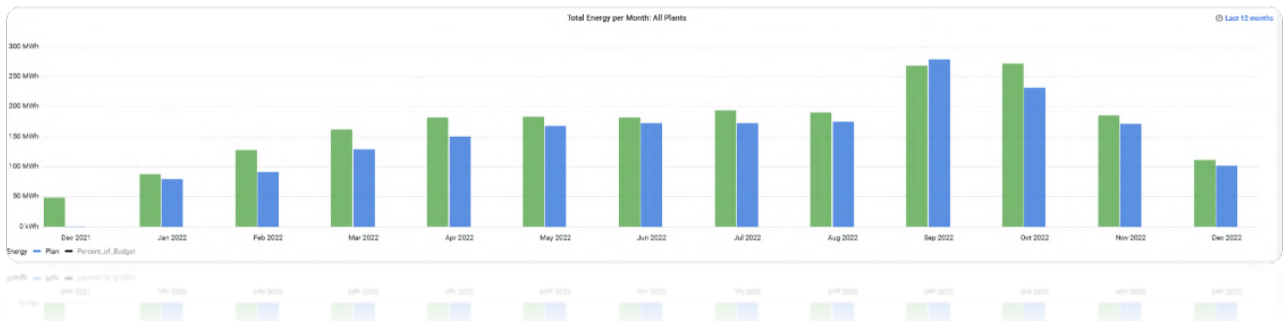


Comparing systems within the fleet

You can compare all your systems and thus detect if single systems underperform.

Planned Production

On a daily or monthly level, the planned energy production can be entered for the next years. In this way, the energy actually produced can be compared with it, so that deviations and performance can be shown.



Performance

By using an additional irradiation sensor, the actual production can be compared with the theoretically possible production based on the measured irradiation.



Communication - Reports

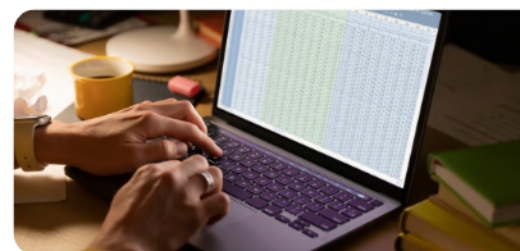
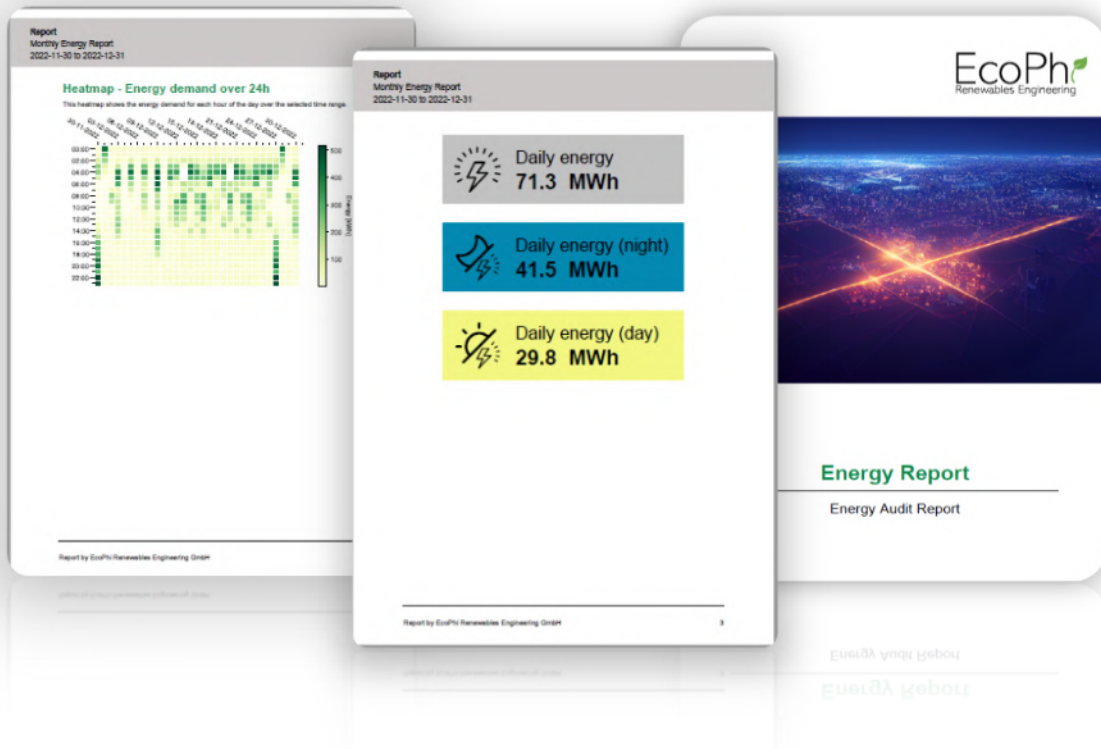
PDF Reports

Customers can configure their individual reports with our smart report creator. Those will be sent out in specified intervals, for example each week, month, or year.

For any report, multiple email recipients can be defined. Not only the content but also the look of the report can be adjusted, for example to match the branding of the customer.

Email Report

Sometimes you only need a few values in regular intervals. It is possible to get your KPIs every day or in any other interval delivered to the email inboxes of your choice.



Communication – Alarms and notifications

Alarms

EcoPhi offers two different alarm types:

- Simple threshold
- Threshold over a period of time

The alarms can be created and adjusted individually for each project and recipient. Multiple recipients can be configured for each alarm.

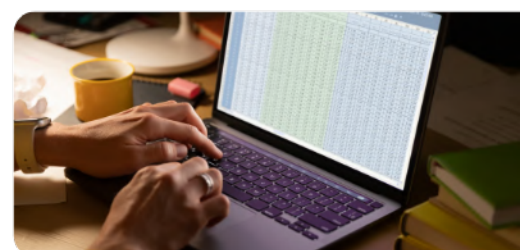
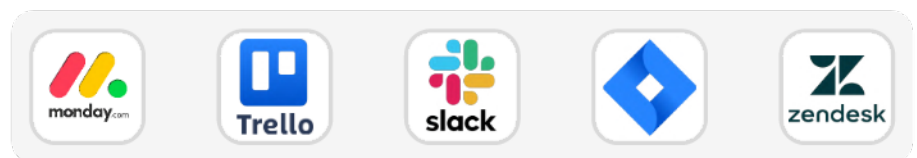
The alarm log tracks your alarm history. Different alarm visualizations enable quick troubleshooting and analyses.

Notification channels

Recipients are normally being informed via email when an alarm is triggered. Multiple email SMS messages and event triggers can be configured to be sent directly from the EcoPhi Boxes to pre-defined phone numbers.

Individual channels

Alarms and notifications as well as reports can also be linked to specific communication channels. For example, an alarm could trigger a message in a Slack channel, open a Trello card or a ticket in your ticketing system. Get in touch with us to see if your individual channel can be integrated.



Whitelabeling

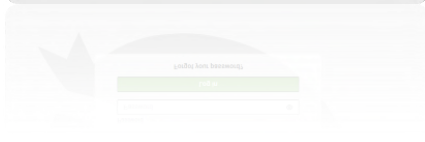
The cloud platform can be individually white-labeled.

Themes, company colors, logo, links and custom domains can be adjusted.

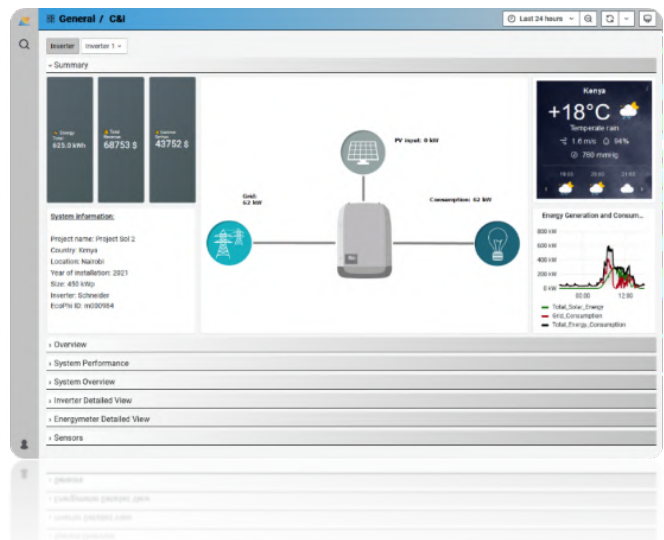
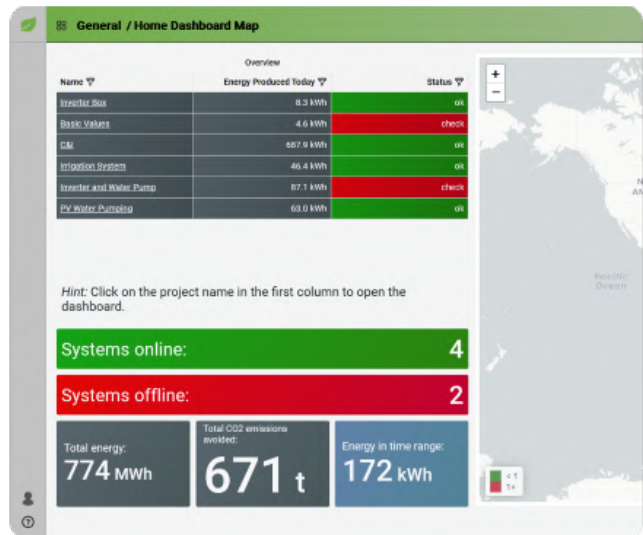
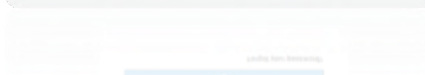
There are two options for domains:

- You can use the generic EcoPhi domain your-company.remote-monitoring.io
- or
- Your own domain monitoring.your-domain.xy

EcoPhi Platform



Your Platform





30+
Countries

500+ Units
Deployed worldwide

70+
B2B Customers

35%
Europe

45%
Africa

5%
Americas

15%
Asia

20+
Partnerships

Discover more



www.ecophi.io

contact@ecophi.de

Phone:
+49 721 18126740

Business Whatsapp:
+49 1521 451 6598

EcoPhi
EMPOWERING CLEAN TECHNOLOGIES

EcoPhi Renewables Engineering GmbH Alter Schlachthof 33, 76131 Karlsruhe, Germany